

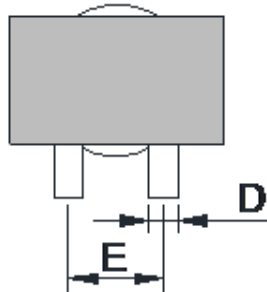


# ER28 High current choke Choke



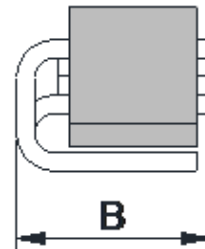
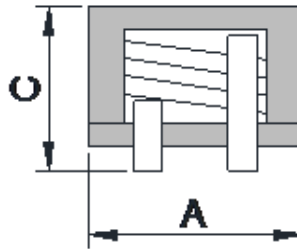
## Application

- Server product
- Hi Power product



## Features

- Can carry more current.
- Coil temperature uniformity.
- Good heat dissipation.



規格	A (mm)	B (mm)	C (mm)	額定電流 (A)	DCR (mΩ) max	應用位置	作業方式
10uH	30.0	21.0	16.0	20	3.5	Filter	SMD
4.35uH	30.0	21.0	17.0	30	1.6	Filter	SMD
1.25uH	30.0	21.0	17.0	50	0.8	Filter	SMD
0.44uH	30.0	21.0	18.0	70	0.36	Filter	SMD

DC Bias

