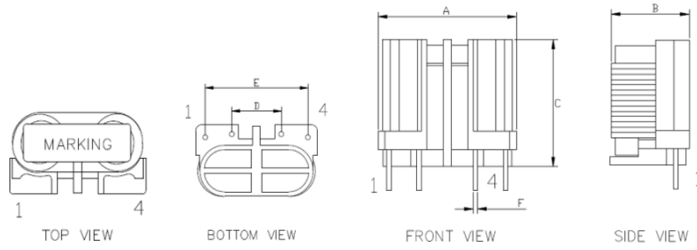


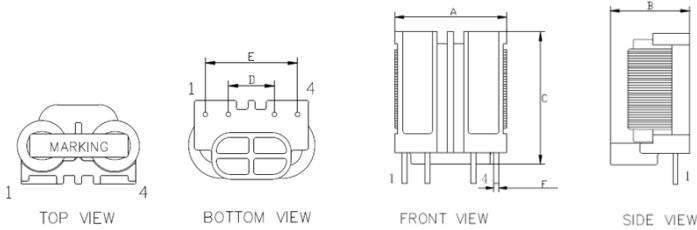


# FT TYPE Common Mode Choke

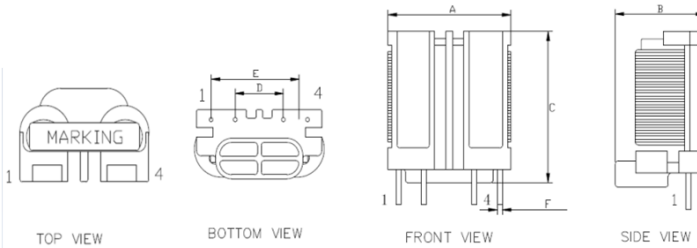
Type:1



Type:2



Type:3



## Electrical

- **Rated Voltage:** AC/DC 250V
- **Inductance range:** 5.5~30.0mH ±30%  
**Test Condition:** 10KHz 0.3V
- **Operating Temperature Range:** -25~120°C
- **Withstanding Voltage:** AC 2.0KV 60Sec.  
**(Winding to Winding)**
- **Rated current range:** 1.0~5.0A

## Features

- Winding directly to the closed magnetic path core.
- Use the flat wire,improving the space factor.
- Single-phase winding,thereby dramatically reduce stray capacitance.
- Achieve a high inductance in both common mode and normal mode.
- Achieve a high magnetic saturation characteristics.
- No layer-short,higher quality.
- High attenuation to the normal mode noise
- Winding automatic

Part No	L(mH) ±30% @10KHz	IDC (A)	Dim A Max mm	Dim B Max mm	Dim C Max mm	Dim D ±0.5 mm	Dim E ±0.5 mm	Dim F ±0.1 mm	Type
FT15-010150V	15.0	1.0							
FT15-010125V	12.5	1.0	21.5	13.0	17.5	8.2	17.0	0.7	1
FT15-1R5090V	9.0	1.5							
FT19-1R5225V	22.5	1.5							
FT19-020140V	14.0	2.0							
FT19-030095V	9.5	3.0	23.0	15.0	25.5	8.0	16.0	0.8	2
FT19-3R5070V	7.0	3.5							
FT24-3R5150V	15.0	3.5	22.5	15.0	30.5	8.0	16.0	0.8	3